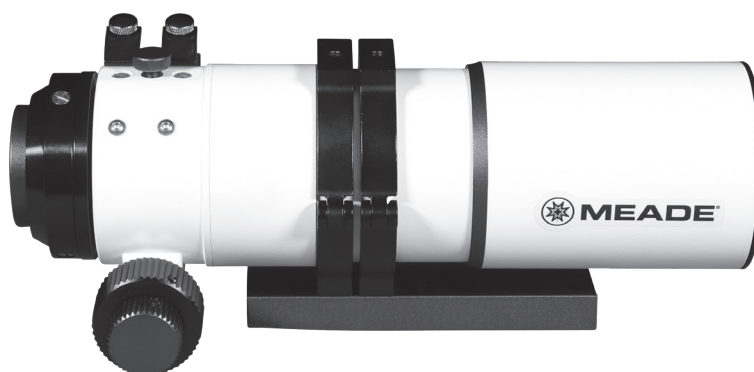


# Series 6000 APO Astrograph Refractor Optical Tubes

## INSTRUCTIONS



### **WARNING!**

*Never use a Meade® Telescope to look at the Sun! Looking at or near the Sun will cause instant and irreversible damage to your eye. Eye damage is often painless, so there is no warning to the observer that damage has occurred until it is too late. Do not point the telescope or its finder at or near the Sun. Do not look through the telescope or its finder as it is moving. Children should always have adult supervision while observing.*

### **Introduction:**

The Meade Series 6000 APO Astrographs are true four-element petzval apochromatic refractors that are virtually free of chromatic aberration (color fringing), providing pinpoint star images to the corner of the edges photographically. A Series 6000 ED APO is the ideal companion for your larger Advanced Coma-Free Cassegrain, or Newtonian scope. When mounted piggybacked to the larger telescope, a Series 6000 APO Astrograph is the ideal wide-field photography scope when guided by the primary instrument and doubles as a guide scope for the primary telescope. It also makes an ideal lightweight and portable scope for flawless photographic images.

*NOTE: This refractor is an astrograph built for photographic purposes and cannot be used visually.*

### **Features:**

- **FAST FOCAL RATIO:** At f/5 (70mm), the focal ratio of these scopes is ideal for wide field astrophotography.
- **PREMIUM ED GLASS:** Meade uses premium Extremely Low Dispersion glass. This specialized glass is crafted to achieve a very small change in refractive index across the entire visual light spectrum. This makes the Series 6000 astrograph the perfect choice for a fast, high performance optical design like the Meade Series 6000 ED APOs.
- **FULLY MULTI-COATED LENSES:** Meade broadband fully multicoated lenses ensure the highest possible light transmission maximizing image brightness in minimum exposure time, therefore allowing more images to be taken in an evening.
- **TRUE FLAT FIELD:** A true quadruplet optical design guarantees the textbook color correction and pin-point star images you expect from a premium astrograph.
- **DEW SHIELD/SUN SHADE:** An essential accessory built in to the design for your convenience.
- **MACHINED ALUMINUM DUAL SPEED RACK AND PINION FOCUSER:** Critical for fine photography this superior focuser gives the operator the ability to smoothly and accurately achieve perfect focus. Fine and super fine focusing speeds of 10:1 reduction. Accepts standard 48mm threaded accessories.





**(Features Continued)**

- **PRECISION, EASY TO READ FOCUS SCALE ON FOCUSER DRAW TUBE:** Easily repeat critical focus points.
- **CRADLE RINGS AND MOUNTING BRACKET:** Allows mounting on a wide variety of Meade and non-Meade German Equatorial Mounts. Mounting bolts (not included) are standard M6x1.0

**Using the Focuser Assembly:**

The back of the focusing drawtube has 48mm threads which will accept any camera or photographic accessories with similar thread diameter.

Thread the desired camera or accessory onto the back of the telescope as shown in the picture below. Once the camera or accessory is threaded onto the telescope you can rotate the camera by loosening the rotator locking knob and spin the camera or accessory to the desired position.

If you have a question concerning use of the Meade SERIES 6000 ED APO REFRACTOR, call the Meade Instruments Consumer Service Department at (800) 626-3233. Department hours are 7:00 AM to 4:00 PM, Pacific Time, Monday through Friday.

**Meade Limited Warranty**

Every Meade telescope and telescope accessory is warranted by Meade Instruments Corp ("Meade") to be free of defects in materials and workmanship for a period of ONE YEAR from the date of original purchase in the U.S.A. and Canada. Meade will repair or replace a product, or part thereof, found by Meade to be defective, provided the defective part is returned to Meade, freight-prepaid, with proof of purchase. This warranty applies to the original purchaser only and is non-transferable. Meade products purchased outside North America are not included in this warranty, but are covered under separate warranties issued by Meade international distributors. RGA Number Required: Prior to the return of any product or part, a Return Goods Authorization (RGA) number must be obtained from Meade by writing, or calling (800) 626-3233. Each returned part or product must include a written statement detailing the nature of the claimed defect, as well as the owner's name, address, and phone number. This warranty is not valid in cases where the product has been abused or mishandled, where unauthorized repairs have been attempted or performed, or where depreciation of the product is due to normal wear-and-tear. Meade specifically disclaims special, indirect, or consequential damages or lost profit which may result from a breach of this warranty. Any implied warranties which cannot be disclaimed are hereby limited to a term of one year from the date of original retail purchase. This warranty gives you specific rights. You may have other rights which vary from state to state. Meade reserves the right to change product specifications or to discontinue products without notice.

